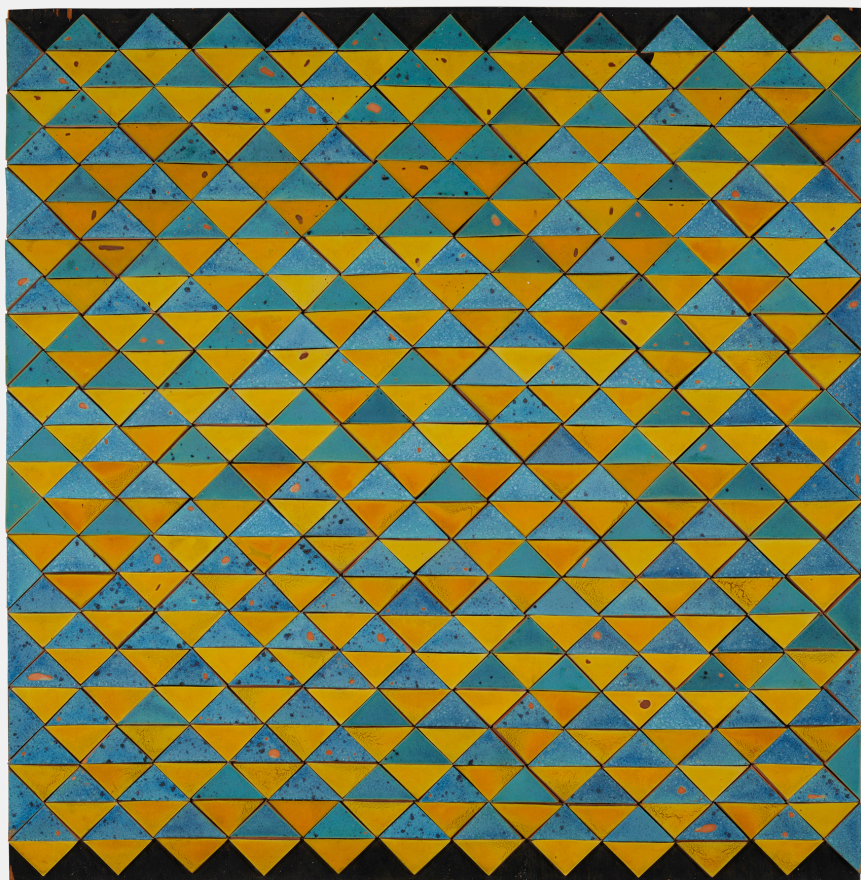


# MODERN DESIGN



579

**DOYLE LANE**

Untitled (Clay Painting)

glazed earthenware over painted wood

47½ h × 46½ w × 1¼ d in (121 × 118 × 3 cm)

**Provenance:** The Artist | Private Collection | Thence by descent

**Estimate:** \$20,000–30,000

**Result:** \$81,900

**Auction**

20 January 2023

10:00 am et

**Rago**

333 North Main Street

Lambertville NJ

t 609 397 9374

f 609 397 9377

[ragoarts.com](https://www.ragoarts.com)

[bid@ragoarts.com](mailto:bid@ragoarts.com)

**RAGO**