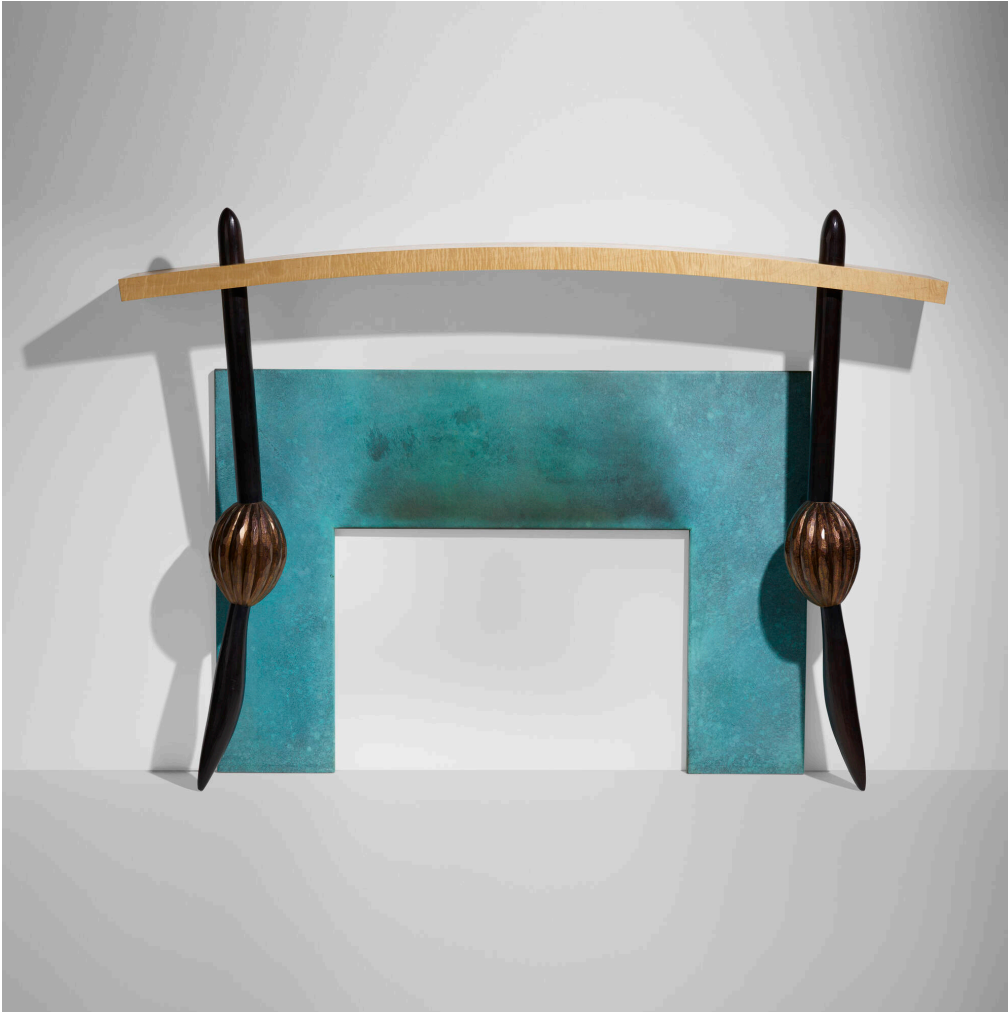


MODERN DESIGN



584

WENDELL CASTLE

Mantel for the Peter Joseph Residence

USA, 1996 | poplar, curly maple veneer, polychromed jelutong, ebonized mahogany, and bronze
58½ h × 81 w × 12 d in (149 × 206 × 30 cm)

This unique work is registered with the artist's studio as number 2927.

Provenance: Collection of Peter Joseph, Southampton | Thence by descent

Literature: *Wendell Castle: A Catalogue Raisonné 1958-2012*, Eerdmans, ppg. 386-387, no. IV.703 illustrates this work

Estimate: \$7,000–10,000

Result: \$13,750

Auction

13 May 2022

11:00 am et

Rago

333 North Main Street

Lambertville NJ

t 609 397 9374

f 609 397 9377

ragoarts.com

bid@ragoarts.com

RAGO