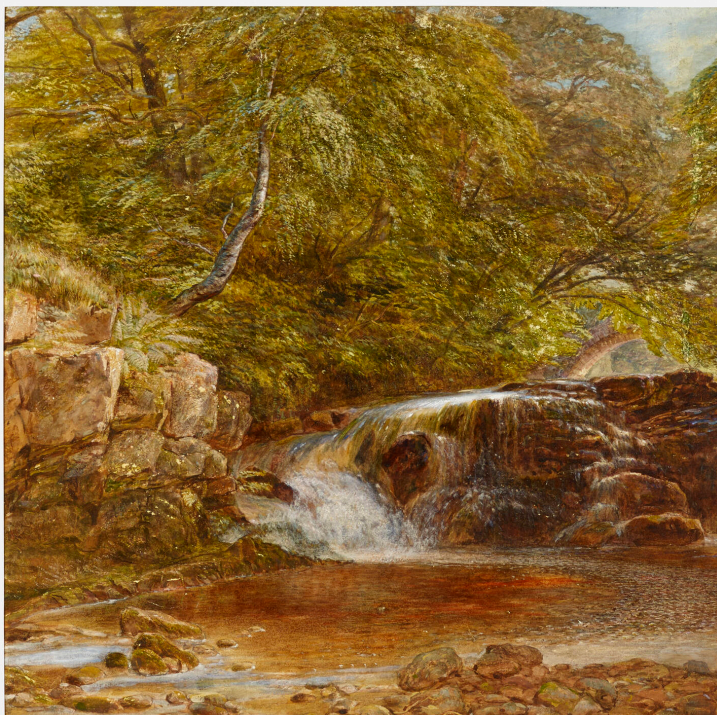


SPANIERMAN DAY 2



Auction

29 April 2021
11:00 am et

Rago

333 North Main Street
Lambertville NJ
t 609 397 9374
f 609 397 9377

ragoarts.com

bid@ragoarts.com

452

THOMAS CRESWICK

Forest Interior, A Northumberland, England View

gouache, whiting and graphite on paper

19¼ h × 19¼ w in (50 × 50 cm)

Signed to verso 'T. Creswick'.

Provenance: Doyle, *Fine Furniture, Decorations and Paintings - Chinese Furniture and Decorative Asian Works of Art*, 24 February 1999, Lot 21

Estimate: \$800–1,200

Result: \$938

RAGO