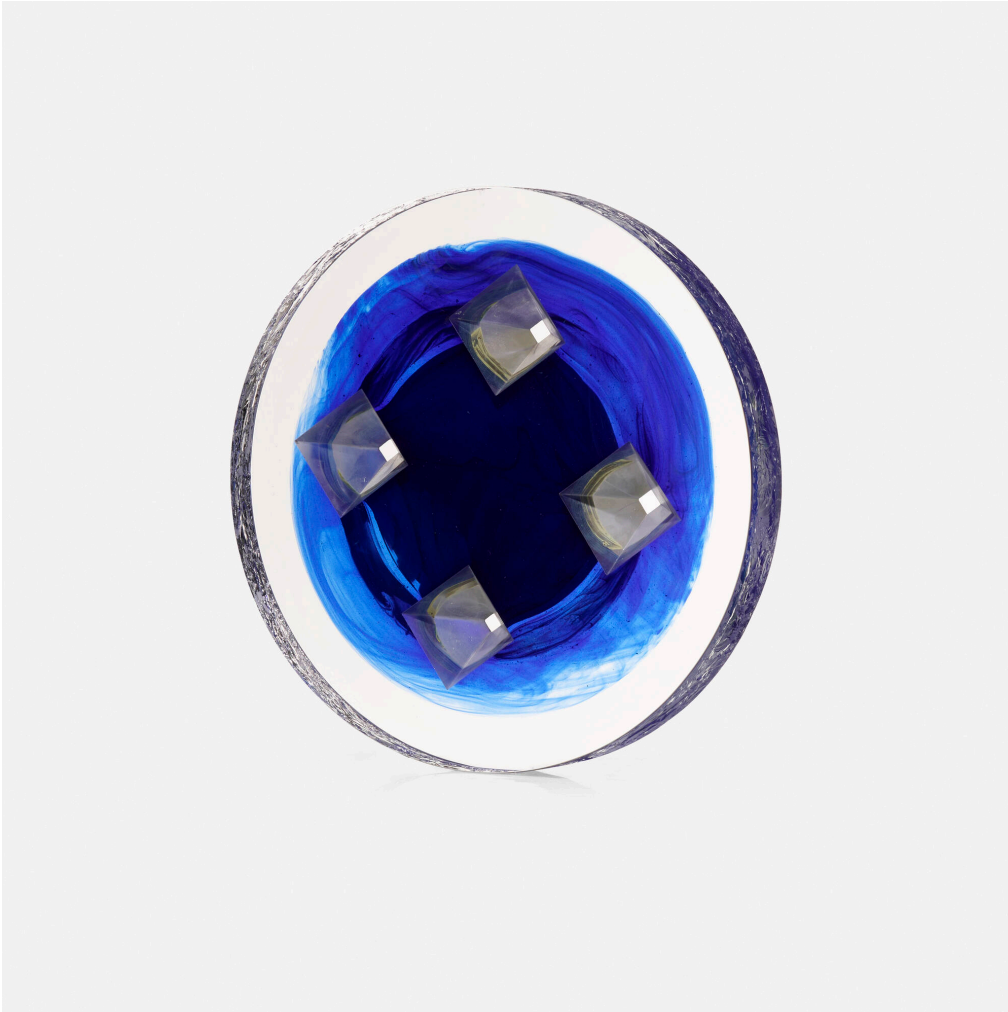


MODERN DESIGN



744

STEVEN WEINBERG
Mandala, Cobalt and Silvered

USA, c. 2010 | cast and polished optical glass with cobalt and silver leaf inclusions
2 h × 15¾ dia in (5 × 40 cm)

The textured surface along the curved side was achieved with the 'glue chipped' technique, which involves etching the glass then applying animal hide glue and allowing it to dry. The drying glue exerts pressure on the surface and chips off pieces of glass in a random pattern.

Provenance: Private Collection

Estimate: \$2,000–3,000

Auction

22 January 2021
11:00 am et

Rago

333 North Main Street
Lambertville NJ
t 609 397 9374
f 609 397 9377

ragoarts.com
bid@ragoarts.com

RAGO