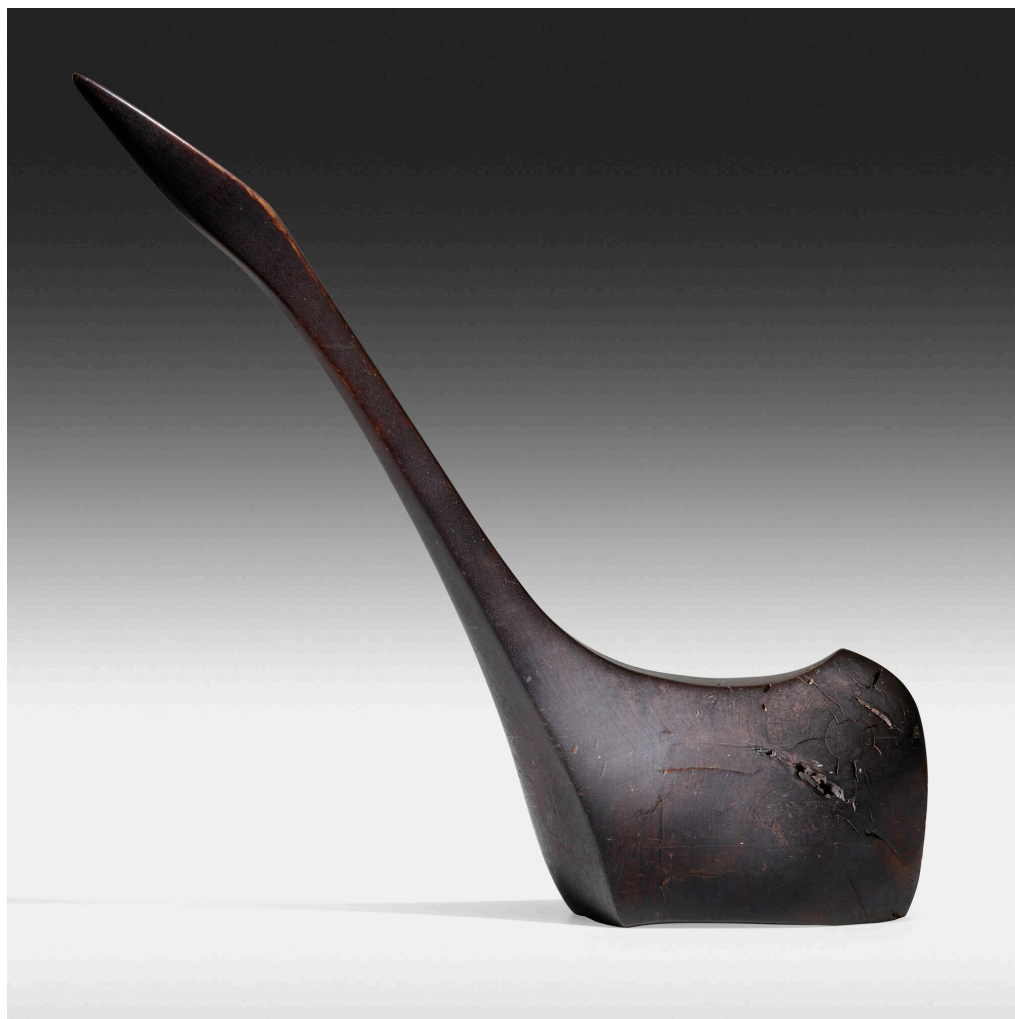


MODERN DESIGN



440

WHARTON ESHERICK

Goose

USA, 1938 | carved walnut

24 h x 23 w x 8 d in (61 x 58 x 20 cm)

Carved signature and date to underside 'Wharton Esherick 1938'.

Provenance: Gift from the artist, Private Collection, Pennsylvania | Thence by descent

Estimate: \$18,000–22,000

Result: \$60,000

Auction

22 January 2021

11:00 am et

Rago

333 North Main Street

Lambertville NJ

t 609 397 9374

f 609 397 9377

ragoarts.com

bid@ragoarts.com

RAGO