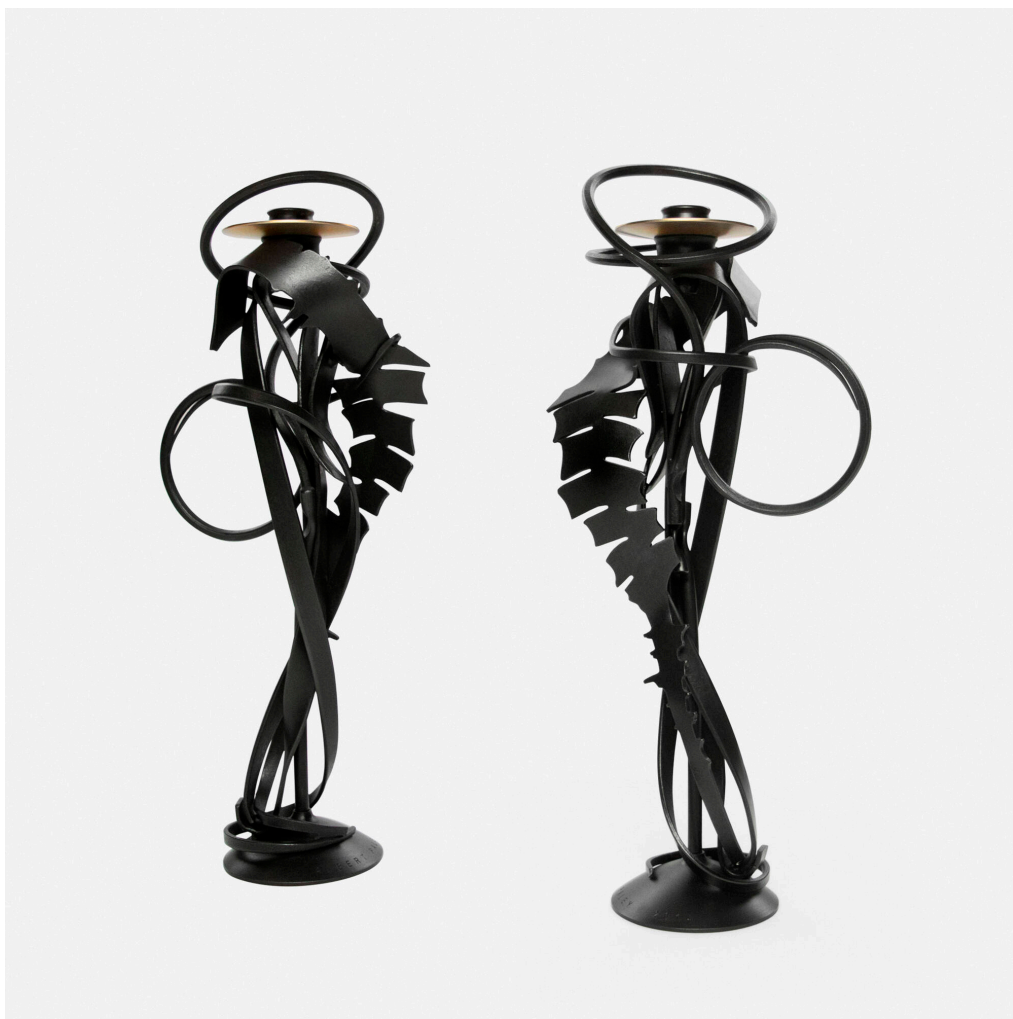


# MODERN DESIGN



## Auction

13 May 2020

11:00 am et

## Rago

333 North Main Street

Lambertville NJ

t 609 397 9374

f 609 397 9377

[ragoarts.com](http://ragoarts.com)

[bid@ragoarts.com](mailto:bid@ragoarts.com)

## 263

**ALBERT PALEY**

**Double Shear Candleholders, pair**

forged mild steel with a blackened patina, removable brass bobeche (collars)

15½ h × 6 w × 4¼ d in (39 × 15 × 11 cm)

**Bidding starts at \$3,000**

**Buyer's Premium will not be charged for this lot.**

Stamped signature and date. These examples are from the edition of 50 pairs.

Of the primary market; suggested retail: \$6,000

**Provenance:** Collection of the Artist

**Estimate:** \$4,500–6,500

**Result:** \$5,313

**RAGO**