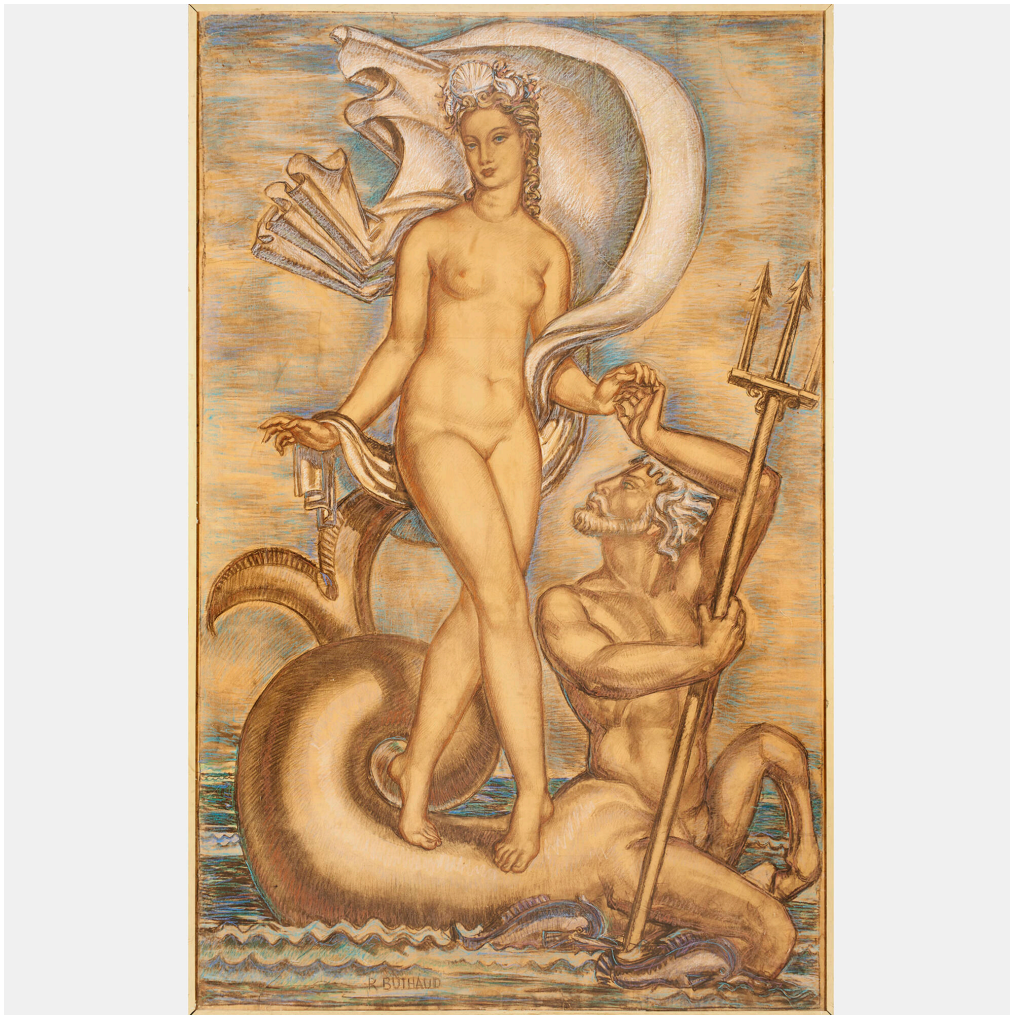


EARLY 20TH C. DESIGN



Auction

18 May 2019
11:00 am et

Rago

333 North Main Street
Lambertville NJ
t 609 397 9374
f 609 397 9377

ragoarts.com
bid@ragoarts.com

1038

RENÉ BUTHAUD

Massive cartoon (Venus and Neptune)

France

RENE BUTHAUD (1886 - 1986) Massive cartoon (Venus and Neptune), France (framed); Pastel and charcoal, linen-backed paper; Signed R. BUTHAUD; Sight: 91 1/2" x 59 3/4"; Provenance: The artist; Michel Fortin, Paris; Collection of Stephen Engel, Florida; Exhibited: René Buthaud: Collection of the Artist, Michel Fortin Gallery, New York, 1981, cat. no. 40; This work was likely a study for a massive verre églomisé panel, of which he created approximately twenty between 1933 and 1970. It is unknown whether this particular design was realized.

Estimate: \$9,000–14,000

Result: \$9,375

RAGO