

Contact:

Miriam Tucker

(609) 397-9374 x 241

mtucker@ragoarts.com

FOR IMMEDIATE RELEASE
Through September 30, 2010

RAGO'S HOLDS A 1,300+ LOT 20TH C. DESIGN AUCTION ON OCTOBER 1-3

Fresh property from U.S. and abroad includes top work from Castle, Chareau, Chihuly, Friedeberg, Grueby, Martin Brothers, Nakashima, Overbeck, Paley, Rohlf, Schreckengost, Stickley, Tiffany, Voukos, Wegner.

Lambertville, NJ On Friday, October 1, Saturday, October 2 and Sunday, October 3, 2010 at noon, the Rago Arts and Auction Center will hold a 1,300+ lot auction of 20th C. Decorative Arts and furnishings, the vast majority new to the market, fresh from private collections secured in the US and abroad. Among the top property in the sale is work from Castle, Chareau, Chihuly, Friedeberg, Martin Brothers, Nakashima, Paley, Rohlf, Schreckengost, Stickley, Tiffany, Voukos and Wegner.

"Simply put, this is the best selection of 20th C. design that we have brought to market in three years. There are not just good, but great examples from the finest makers in every category and the prices are right." says David Rago.

Auction

- Friday, October 1 at Noon: Early 20th C. Design/Arts and Crafts
- Saturday/Sunday, October 2 and 3 at Noon: Modern Design
- Telephone, absentee, online bidding available for those unable to attend.

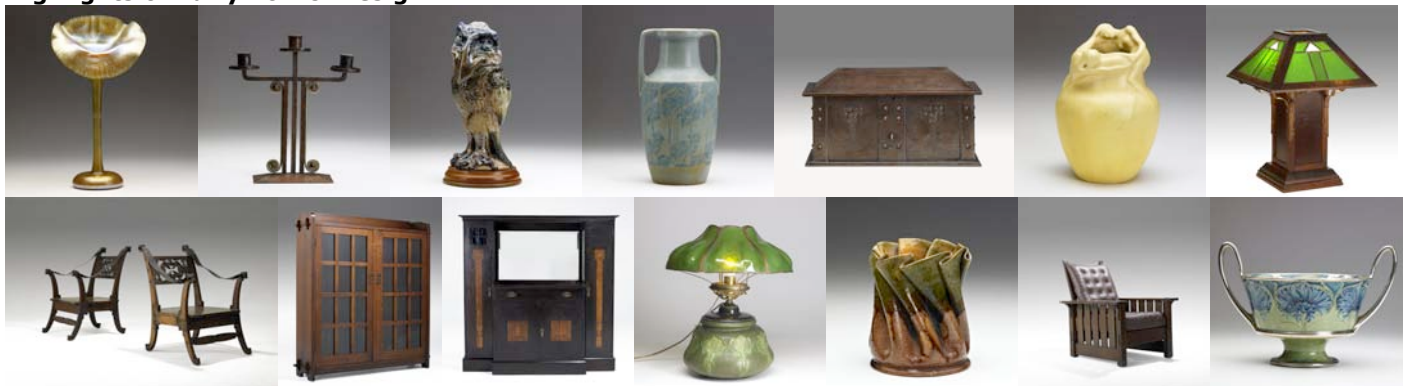
Auction Exhibition/Preview

- Saturday, September 25, 2010 through Thursday, September 30, from 12-5 PM and by appointment. Doors open on days of sale at 9 a.m.
- Rago's is located midway between New York City and Philadelphia. Directions online at ragoarts.com

Catalogue

- Printed catalogues are available for \$25 by calling 609.397.9374 or e-mailing a request to info@ragoarts.com.
- View a complete online catalogue with color images at ragoarts.com as of September 13, 2010.

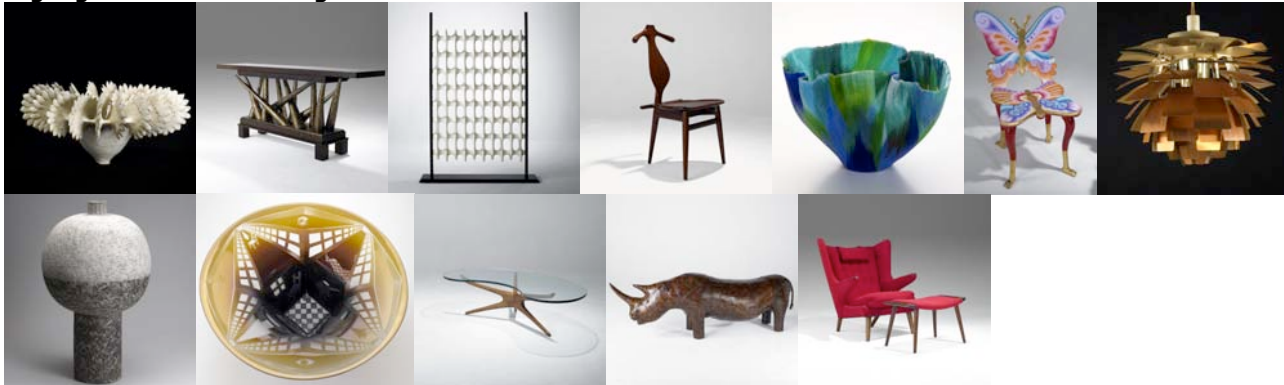
Highlights of Early 20th C. Design



Row One. Tiffany Studios Favrile Jack-in-the-Pulpit bud vase, estimate: \$4,500-6,500. Dard Hunter for Roycroft hammered copper and silver candelabrum, estimate: \$20,000-30,000. Martin Brothers glazed stoneware bird tobacco jar, 1890, estimate: \$12,500-17,000. Overbeck tall urn incised and glazed with quatrefoils, estimate: \$15,000-20,000. Karl

Kipp for Roycroft, hammered copper jewel casket, estimate: \$2,000-3,000. Anna Marie Valentien for Rookwood rare Modeled Mat vase with nudes, 1910, estimate: \$2,000-3,000. Dard Hunter for Roycroft important leaded glass, oak and copper table lamp, estimate: \$15,000-25,000. **Row Two.** Charles Rohlf's rare pair of carved oak and hard leather chairs, 1901, estimate: \$15,000-25,000. L. & J.G. Stickley/Onondaga Shops double-door bookcase, estimate: \$5,000-7,000. Shop of the Crafters, rare and exceptional inlaid cabinet (part of a dining set), estimate: \$6,000-9,000. Grueby and Chandler rare two color lamp base with glass shade, estimate: \$4,000-6,000. George Ohr folded vessel, green and brown glazes, estimate: \$4,500-5,500. Gustav Stickley Morris chair (no. 332), ca. 1905, estimate: \$4,000-6,000. Moorcroft and Shreve large Florian vessel with silver overlay, estimate: \$2,500-3,500.

Highlights of Modern Design



Row One. Ursula Morley Price bisque-fired porcelain bowl, estimate: \$1,500-2,000. Wendell Castle massive wenge console table with polychrome supports, estimate: \$10,000-15,000. Don Harvey sculpted fiberglass and wood room divider, estimate: \$2,500-3,500. Hans Wegner/Johannes Hansen teak, oak and brass valet, estimate: \$6,000-8,000. Mary Ann "Toots" Zynsky fused glass bowl, estimate: \$4,000-6,000. Pedro Friedeberg Silla Mariposa chair with polychrome and gilt finish, estimate: \$6,000-8,000. Poul Henningsen/Louis Poulsen copper Artichoke hanging fixture, c. 1965, estimate: \$3,500-4,500. **Row Two.** Claude Conover two-tone vessel, "Baat", estimate: \$8,500-12,500. Steve Tobin Manhattan Series large etched glass bowl, estimate: \$4,500-6,500. Vladimir Kagan/Ralph Pucci tri-symmetric walnut cocktail table with plate glass top, estimate: \$2,500-4,500. Liberty of London massive distressed leather rhinoceros, estimate: \$2,000-3,000. Hans Wegner/A.P. Stolen teak Papa bear chair and ottoman, estimate: \$4,000-6,000.

Early 20th C. Design

The Early 20th C. Design sale features nearly 400 lots of decorative arts and furnishings.

AMERICAN ART POTTERY: American art pottery in the sale is highlighted by a striking **Grueby** five-tile frieze of palm trees, accompanied by twenty 6" square matte green tiles, from a West Virginia residence, estimated at \$25,000-35,000. There are several impressive lots of **Tiffany Studios**, most notably an extremely rare, large octopus bowl with green crystalline glaze, estimated at \$15,000-20,000. Other fine examples in the sale are a **Sarah Galner for Saturday Evening Girls** exceptional berry set, estimated at \$10,000-15,000; a **Hannah F. Simpson for Newcomb College** fine and rare transitional landscape plaque, 1918, estimated at 6,000-8,000; an **Elizabeth & Hannah Overbeck** tall urn incised and glazed with quatrefoils, estimated at \$20,000-30,000; an **Anna Marie Valentien for Rookwood** rare modeled vase with two nudes in matte yellow glaze, 1910, estimated at \$2,000-3,000; a **George Ohr** fine folded vessel in green and brown glazes, estimated at \$4,500-5,500. The sale contains four **Martin Brothers** Bird Tobacco Jars, each separate lots, with estimates ranging from \$12,500-22,500. Also offered are works from **Grueby, Fulper, George Ohr, Weller, Newcomb College, Rookwood, Owens, and Roseville.**

EUROPEAN POTTERY: A **Moorcroft** and **Shreve** large Florian vessel with silver overlay, estimated at \$2,500-3,500, is among the finest of the European pots offered. There are also several lots of amphora by **Riessner, Stellmacher & Kessel; RSTK; Ernst Wahliss; Doebrich;** and **Paul Dachsel.** Most notably, a **Riessner, Stellmacher & Kessel** amphora porcelain vase with crowned lady and a **RSTK** amphora ceramic lamp base in gres bijou with maiden, both estimated at \$2,000-3,000.

FURNITURE: In the 1960's, Edwin R. Ilardo, a bankruptcy attorney from Hamburg, New York purchased a large grouping of copper, lighting, and furniture being sold off by the Roycroft Inn. Consigned to us for sale, this grouping includes a rare **Dard Hunter** lamp, several bedroom suites, many chairs, rockers, and tables, and a tall magazine pedestal, all original furnishings from the Roycroft Inn, bearing the registration stamp only present on Inn furniture. **Gustav Stickley** furniture highlights include an unusually fine selection of Morris chairs, including bow-arm, drop-arm, and spindle straight and drop-arm chairs. **Charles Rohlf**s is represented with a rare pair of carved and reticulated armchairs, and a rare copper and oak log holder. In all, over 100 pieces of Stickley and Roycroft furniture will cross the block for sale.

LIGHTING: The selection of early 20th C. lighting designers include: **Handel, Pittsburg, Duffner & Kimberly, Dard Hunter, Roycroft, Tiffany Studios, Lillian Palmer**, and more. There are, as always, several lots by **Tiffany Studios**, including a table lamp with a Daffodil shade, estimated at \$12,000-18,000; a parcel-gilt bronze Linen Fold table lamp, estimated at \$7,000-10,000; an Acorn chandelier with large turtleback tile, estimated at \$7,000-10,000, and a **Marie Seaman** for **Grueby** (lamp base) and **Tiffany Studios** (shade) rare table lamp, estimated at \$8,000-12,000. Also of note is a **Dard Hunter** for **Roycroft** important leaded glass, oak and copper table lamp from the Roycroft Inn, East Aurora, NY, estimated at 15,000-25,000 and a **Grueby and Chandler** rare two-color lamp base with modified original fittings and glass shade, estimated at \$4,000-6,000.

METALWORK: There is a strong selection of metalwork, notably a **Dard Hunter** for **Roycroft** exceptional hammered copper and silver candelabrum, 1906-08, estimated at \$25,000-50,000. Other notable pieces include a **Karl Kipp and Dard Hunter Roycroft** hammered copper and silver humidior, estimated at \$4,500-6,500; an important **Joseph Heinrichs** big-horn sheep horns, hammered copper, silver and brass smoking set, estimated at \$10,000-15,000; a **Tiffany Studios** twenty-four-piece Ninth Century desk set, estimated at \$5,000-7,000, and a rare **Samuel Yellin** pair of iron and bronze andirons, estimated at \$2,000-3,000. Other makers include: **Stickley Brothers, Onondaga Metal Shops, Clewell, Dirk Van Erp, and Jarvie**.

ART GLASS: American and European glass makers in the sale include: **Tiffany Studios, Lalique, Charles Schneider, Burgun & Schverer Co, Daum, Durand, Steuben, Quezal, Galle, D'Argental, and Gabriel Argy-Rousseau**. **Tiffany Studios** glass pieces of note include, most notably, a tall Jack-in-the-Pulpit bud vase, estimated at \$4,500-6,500 and a Favre glass floriform vase, estimated at \$3,500-4,500. There are more than a dozen **Lalique** pieces in the sale, many are brooches and pendants, such as "Chauve-Souris", estimated at \$1,000-1,500. Another notable Lalique piece is a Fontainebleau vase of blue frosted and clear glass, c. 1930, estimated at \$2,500-3,500. Also worth mentioning is a tall "Monnaie du Pape" cameo glass vase by **Charles Schneider/Verreries Schneider**, estimated at \$2,000-3,000; and a **Daum** enameled opalescent martelé vase with Dutch landscape, estimated at \$1,800-2,400.

Also notable: prints, paintings, books.

20th/21st C. Modern Design

The Modern Design auction features over 825 lots of furniture and decorative arts from the design movements of the 1920s to contemporary makers.

FURNITURE: Featured furniture in the Modern sale includes: a **Wendell Castle** massive wenge console table with polychrome supports, estimated at \$10,000-15,000; a **Don Harvey** 1960's sculpted fiberglass and wood room divider, estimated at \$2,500-3,500; a **Hans Wegner** for **Johannes Hansen** 1953 fine teak, oak and brass valet, estimated at \$6,000-8,000; a **Hans Wegner** for **A.P. Stolen** teak Papa bear chair and ottoman, estimated at \$4,000-6,000; a **Pedro Friedeberg** 1983 carved Mexican mahogany Silla Mariposa chair, estimated at \$6,000-8,000; a **Vladimir Kagan** for **Ralph Pucci** tri-symmetric walnut cocktail table, estimated at \$2,500-4,500. Also notable is a **Pierre Chareau** mahogany and steel pair of stools and weighted high table, estimated at \$25,000-35,000, which was used at the Grand Hotel at Tours, France, 1926. Other stand-out items include a **T.H. Robjohn-Gibbings** for **Widdicomb** rare large Mesa

mahogany table, estimated at \$15,000-25,000; an **Albert Paley** fine forged steel pedestal dining table, estimated at \$19,000-24,000; and several items by **George Nakashima**, including an important collection from a Whitford, PA residence designed by a Taliesin architect colleague of Frank Lloyd Wright's. The most spectacular **Nakashima** from this group must be a very abstract long coffee table with burl top, estimated at \$65,000-\$85,000. Other furniture designers include: **Abel Sorenson** for **Knoll**, **Afra and Tobia Scarpa** for **Gavina**, **Alvar Aalto** for **Artek**, **Borge Mogensen**, **Charles & Ray Eames**, **Herman Miller**, **Donald Deskey**, **Donald Drumm**, **Ed Moulthrop**, **Edward Wormley** for **Dunbar**, **Eero Saarinen** for **Knoll**, **Finn Juhl**, **Florence Knoll**, **George Nelson** for **Herman Miller**, **Gerard Van Den Berg** for **Montis**, **Gio Ponti** for **Cassina**, **Gio Ponti** for **Singer & Sons**, **Jacques Adnet**, **James Mont**, **Jay Stanger**, **Jean Prouve**, **Josef Hoffman**, **Judy Kensley McKie**, **Karl Springer**, **Ludwig Mies Van Der Rohe** for **Knoll**, **Marcel Breuer** for **Isokon**, **Milo Baughman** for **Thayer Coggin**, **Nicos Zographos**, **Niels Vodder**, **Paul Evans**, **Peter Pederson**, **Phil Powell**, **Philip and Kelvin Laverne**, **Poul Kjaerholm** for **E. Kold Christensen**, **Sam Maloof**, **Silas Kopf**, **Tommi Parzinger**, **Verner Pantan**, **Ward Bennett**, **Warren Platner**, **Wharton Esherick** and more.

LIGHTING: Lighting in the modern sale includes impressive chandeliers, such as a **Poul Henningsen** for **Louis Poulsen** copper artichoke hanging fixture, c. 1965, estimated at \$3,500-4,500 and an **Erik Høglund** for **Boda** large sixteen-arm iron and glass chandelier, estimated at \$6,000-8,000. Lamps include a **Serge Mouille** enameled aluminum and brass trépiéd lamp, c. 1954, estimated at \$8,000-10,000; a **Jean Perzel** pair of 1930's nickel-plated metal and opaline glass table lamps, estimated at \$4,500-6,500; and a **Gio Ponti** for **Fontana Arte** enameled aluminum, brass and glass floor lamp, designed for the Hotel Parco dei Principi, Sorrento, c. 1960, estimated at \$10,000-15,000. Other lighting designers include: **Arredoluce**, **Carlo Moretti**, **Billy Haines**, **Cedric Hartman**, **Curtis Jere**, **Jacques Adnet**, **Luciano Vistosi**, **Marcello Fantoni**, **Paul Evans**, **Phil Powell**, **T.H. Robsjohn-Gibbins** for **Hansen**, **Tommi Parzinger**, **Walter Von Nessen**, **Willy Daro** and more.

DECORATIVE CERAMICS: Decorative ceramics in the modern sale include a bisque-fired porcelain bowl by **Ursula Morley Price**, estimated at \$1,500-2,000; a **Peter Voulkos** anagama-fired charger, estimated at \$9,500-12,500. There are several lots by **Claude Conover**, ranging in estimate from \$4,500-12,500, most notably a tall and unusual two-tone vessel, "Baat", estimated at \$8,500-12,500. A rare and desirable Jazz bowl by **Viktor Schreckengost** for **Cowan**, estimated at \$20,000-30,000 and an important glazed earthenware wall plaque, estimated at \$15,000-20,000. There are many lots by **Toshiko Takaezu**, ranging in estimate from \$1,000 to \$3,500. Other designers include: **Steve Tobin**, **Scheier**, **Ruth Duckworth**, **Rudy Autio**, **Rudolf Staffel**, **Rosanjin Kitaoji**, **Robert Lallemand**, **Rick Dillingham**, **Richard Devore**, **Pillin**, **Picasso** for **Madoura**, **Paul Chaleff**, **Paul Ogatay**, **Otto and Vivika Heino**, **Marguerite Wildenhain** for **Pond Farm**, **Marco Zanini**, **Lucy Rie**, **Karl Scheid**, **James Lovera**, **Jack Thompson**, **Jack Earl**, **Henry Varnum Poor**, **Guido Gambone**, **Gio Ponti** for **Richard Ginori**, **Cabat**, **Brother Thomas**, **Bill Stewart**, **Betty Woodman**, **Bennett Bean**, **Beatrice Wood**, **Andrea Gill**, **Akio Takamori** and more.

GLASS: Art Glass includes two stand-out bowls: **Mary Ann "Toots" Zynsky** fine fused glass bowl estimated at \$4,000-6,000; and a **Steve Tobin** Manhattan Series large etched glass bowl, c. 1984, estimated at \$4,500-6,500. Sculptural art glass includes a **Dale Chihuly** Venetian sculptural glass vessel, estimated at \$7,500-10,000; and a **John Kuhn** large fused glass sculpture, "Aspen Ice", estimated at \$7,000-9,000. Other glass makers include: **William Morris**, **Fulvio Bianconi** for **Venini**, **Harvey Littleton**, **John Lewis**, **Maurice Louis Legendre** for **Daum**, **Steven Weinberg**, and more.

OTHER/DECORATIVE: Other decorative items in the sale include a **Liberty of London** massive distressed leather rhinoceros distributed by Abercrombie & Fitch, estimated at \$2,000-3,000; several **Bertoia** metal sculptural pieces; turned wood items such as an **Ed Moulthrop** large turned maple vessel, estimated at \$3,500-5,500. Other decorative items include prints by **Harry Bertoia** and **Wharton Esherick**; metalwork by **Albert Paley**; and sculptures by **Tony Smith** and **Edward Zucca** and the work of designers such as **Klaus Ihlenfeld** and **Curtis Jere**.

Notes for the Editor

- High-resolution images available.
- The Rago Arts and Auction Center was established in 1995 by David Rago, a leading expert and dealer in early 20th C. design, who entered the business of auctions in 1984. The Auction Center, located midway between Philadelphia and New York, holds multi-million dollar sales of 20th century decorative arts and furnishings, fine art, jewelry, American, Asian and European estate property for an international clientele. Rago's offers both sellers and buyers a singular blend of global reach and personal service. It is a world-class venue for auction and sale by private treaty. It is also a destination for those who seek to learn and share knowledge about art, antiques and collecting, with free valuations for personal property (from a single piece to collections and estates) and auction exhibitions in house and online.
- Next 20th C. Design Auction: Saturday/Sunday, February 5 and 6, 2011.

END OF PRESS RELEASE