



RAGO ARTS AND AUCTION CENTER >

CONTACTS:

MARILYN WHITE
973.783.3649
MWHITEPR@AOL.COM

MIRIAM TUCKER
609.397.9374 x 241
MTUCKER@RAGOARTS.COM

FOR IMMEDIATE RELEASE
Through May 16, 2009

RAGO'S HOLDS BACK-TO-BACK ART AUCTIONS ON MAY 15 AND 16, 2009 HIGHLIGHTING ORIGINAL WORK FROM KLIMT, REDFIELD, BASALDELLA, LAMBIE, GRABACH, WEI AND FANGOR.

“Desirable” and “reasonable” are the watchwords for the sale of important sculpture by MacMonnies and Baskin; paintings by Luks and Chris Johanson; works on paper by Moore and Leger; and original prints by Rembrandt, Matisse, Close and Frankenthaler.

A collection of daguerreotypes and contemporary photographs are also offered.

Lambertville, NJ: On Friday, May 15th at 2 pm, Rago's will hold a sale of 19th and 20th C. American and European Art. It will be followed on Saturday, May 16th at Noon by a sale of Post-War and Contemporary Art.

The sale includes original work from Klimt, Redfield, Basaldella, Lambie, Grabach, Wei and Fangor; important sculpture by MacMonnies and Baskin; paintings by Luks and Chris Johanson; works on paper by Moore and Leger; and original prints by Rembrandt, Matisse, Close and Frankenthaler. A collection of daguerreotypes and contemporary photographs are also offered.

“The work we have selected is both desirable and priced for today's market,” says Meredith Hilferty, who directs the Fine Art department at Rago's. “There's a great deal to see at a variety of price points from artists both widely recognized and on the cusp.”

Friday, May 15th at 2 pm: 19th and 20th C. American and European Art

As always, Rago's sale of 19th and 20th C. American and European Art includes a compelling selection of paintings by Pennsylvania area artists including Edward Willis Redfield's “Bridge at Charenton, 1900.” This 26" x 32" oil on canvas was exhibited at the Paris Exposition of 1900 (label on verso); the Paris Salon, Pennsylvania Academy of Fine Arts and the National Academy of Design in 1901 and is included in the forthcoming catalogue raisonné by Dr. Thomas Folk. It carries an estimate of \$45,000-55,000.

Fern Isabel Kuns Coppedge is represented by an untitled landscape with house in a Finken frame, estimated at \$30,000-50,000. Other painting highlights are: “Mill Stream” by Alfred Nunamaker (presale estimate \$15,000-25,000); William Langson Lathrop's “Martha's Pasture” in a Yates frame (presale estimate \$25,000-35,000); John Wells James' “Pennsylvania Street” (presale estimate \$7,000-9,000); Charles Warren Eaton's “The Pine Grove”, (presale estimate \$3,000-5,000).

Among the other artists from this region with work in the sale are George Emerick Essig, Paul F. Keene, Jr., Harry Leith-Ross, Giovanni Martino, Joseph Meierhans, Bror Julius Olsson Nordfeldt, Roy Cleveland Nuse, Katherine Steele Renninger, Henry Bayley Snell, George William Sotter and Melville F. Stark.

There are numerous stand-outs among the broader selection of paintings. Rago's is offering a wonderful George Benjamin Luks view of Gramercy Park from 1932. Accompanied by a letter of authenticity from Mercedes Luks, the

artist's widow, it is estimated at \$10,000-15,000. John R. Grabach is represented by "Night Excavation", estimated at \$8,000-12,000 and Reginald Marsh by "Cement Mill Ruin No. 2", estimated at \$5,000-7,000. There are two early works by Rolph Scarlett, each estimated at \$10,000-15,000, "Birds" and "Mother and Child". "Boulevard de la Madeleine" by Edouard Leon Cortes comes accompanied by a Certificate of Expertise & Authenticity from David Klein and is estimated at \$15,000-20,000. A small and untitled Ralph Albert Blakelock landscape can be found at an estimate of \$3,000-5,000. (It has been entered into the Nebraska Blakelock Inventory and assigned to Category II by Mr. Norman A. Geske.) Also of note is an untitled beachscape by Arthur Vidal Diehl with a presale estimate of \$3,500- 4,500. Other artists represented by paintings here include Maurice Braun, Thomas A. De Decker, Tod Lindenmuth, Charles Green Shaw, Henry Pember Smith and Theodore Wores.

Rago's will offer an elegant pencil on paper, ca. 1914, by Gustav Klimt. "Liebespaar nach rechts (Lovers)" is descended from the family of the artist, well-documented and offered with an estimate of \$100,000-150,000. There is an archetypal gouache by Antonio Zoran Music, estimated at \$15,000-20,000; a whimsical ink drawing by Marc Chagall (presale estimate \$8,000-12,000), "Three Reclining Figures" by Henry Moore (presale estimate \$25,000-35,000); and Fernand Leger's "Les Deux Soldats" (presale estimate \$20,000-30,000). A number of other fine works on paper vie for attention here, among them Charles Ephraim Burchfield's "The Return of the Bluebirds, a pencil, ink and wash from 1952, examined by Burchfield scholar John W. Straus (presale estimate of \$5,000-7,000); three lots of works on paper by Olaf Carl Wieghorst (presale estimate of \$5,000-7,000); as well as the art of David Davidovich Burliuk and Walt Kuhn.

Rago's strong reputation for works of American sculpture is only enhanced by this sale's two fine bronzes by Frederick William MacMonnies, "Bacchante and Infant Faun" from 1894 (presale estimate \$8,000-12,000) and the 1890 "Pan of Rohallion" (presale estimate \$10,000-15,000). A muscular, figural bronze by Leonard Baskin is also of note, with an estimate of \$8,000-12,000. There are two medals by Augustus Saint-Gaudens, as well as work by Antoine-Louis Barye, Beatrice Fenton, Eugen Gauss, Charles Henry Humphriss, Clio Hinton Huneker Bracken, Bonnie MacLeary, Edith Barretto Parsons and Hugo Robus.

Highlights among the prints include the pochoir "Sword Swallow" by Henri Matisse from the original edition of 100 of the Jazz portfolio (\$9,000-12,000); Feme Couchee, a lithograph from a limited edition of 50 by Pablo Picasso (presale estimate \$9,000-12,000); a 1641 Rembrandt van Rijn etching, "The Virgin and Child in the Clouds" for \$4,000-6,000 (one of four by this artist in the sale); a Milton Avery woodcut entitled "Sailboat" (presale estimate \$3,000-5,000); Nettie Blanche Lazzell's woodcut "Cape Cod Cottage" (presale estimate \$4,000-6,000); and more work from Picasso, as well as from Thomas Hart Benton, Georges Braque and Benton Murdoch Spruance.

Rago's has also accepted a delightful selection of daguerreotypes and ambrotypes from a private collector. Many are occupational and, within this, medical. There are portraits of soldiers, Women's Rights activists, an African American nanny with her charge; children; animals; and gentlefolk, including a well-dressed man with both Star of David and cross.

Saturday, May 16th at Noon: Post-War and Contemporary Art

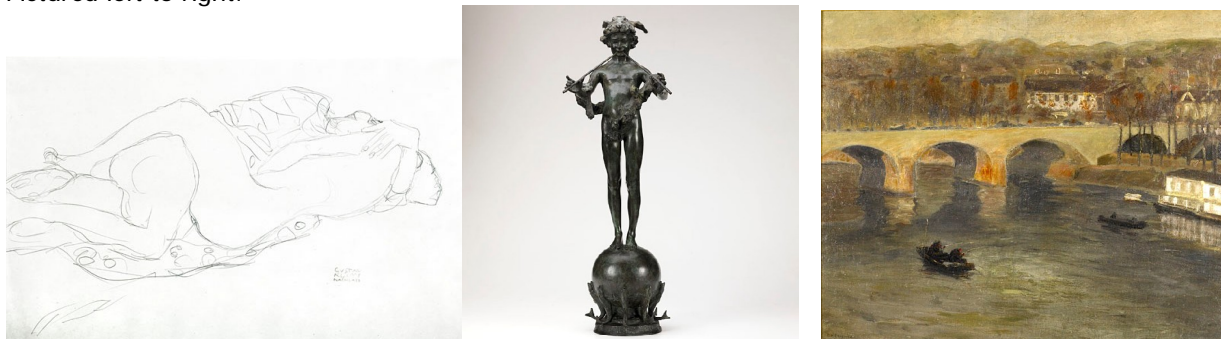
Rago's Post-War and Contemporary sale rounds out the week of art auctions held in and around New York every May.

A highlight among the paintings is a large, untitled Wojcieck (Voy) Fangor from 1964, perfectly of its time. Signed and dated, it is offered at \$30,000-50,000. Also sure to draw interest is a mixed media on board by Dario Villalba (presale estimate \$2,500-3,500) and Chris Johanson's acrylic "Neighborhood" (presale estimate \$2,000-3,000), as well as work by George Morrison, Peter Wegner and John Von Wicht,

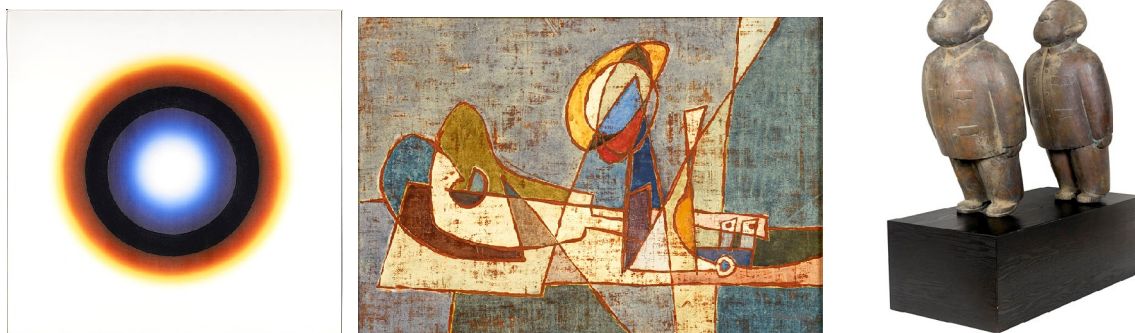
The bronze sculpture of contemporary artist Zhu Wei is proudly offered for the first time at Rago's, with his modern take on Chinese party cadres, "China China", estimated at \$80,000-120,000. Also among the sculptures here is Ernesto Caivano's "Stealth Explosion" in painted wood from 2003, estimated at \$1,800-2,400. A take on the candlestand furniture form by Richard Pettibone and one of Jeff Koons' best loved works, "Puppy" are for sale, both estimated at \$3,000-5,000. Swiss sculptor François Stahly, known for public works both in Europe and America, where Nelson Rockefeller was one of his greatest patrons, is represented by three works in the sale, including his 1963 bronze "Croissance", purchased directly from the artist (presale estimate \$4,000-6,000). There is also work from Francis Alÿs, Richard Hunt and Takashi Murakami.

A 1948 abstract in gouache by Afro Basaldella with excellent provenance is one of the finest among the works on paper in the sale. It carries an estimate of \$30,000-40,000. Other highlights include Sonia Sekula's "Blue-S" (presale estimate \$2,000-3,000); Jim Lambie's 2001 mixed media "Aretha" (presale estimate \$3,000-5,000); an untitled work in conte crayon and charcoal by Maureen Gallace (presale estimate \$1,200-1,800); Sol LeWitt's gouache "Irregular Grid, (presale estimate \$3,000-5,000); three works by Marcel Dzama, as well as the work of William Baziotis, Cecily Brown, Ingrid Calame, George Condo, William N. Copley, Gene Davis, Kim Jones, Byron Kim, David Rayson, David Salle, Tim Stoner and Philip Taaffe.

Pictured left to right:



Gustav Klimt Liebespaar nach rechts (Lovers), ca. 1914; Pencil on paper; Stamped; 14 3/4" x 22" (sheet); Literature: Strobl 2466. Est: \$100,000-150,000. **Frederick William MacMonnies** Pan of Rohallion, 1890; Bronze; Signed and dated "Frederick MacMonnies / Paris 1890" and titled; 30 1/8" high. Est: \$10,000-15,000. **Edward Willis Redfield** Bridge at Charenton, 1900; Oil on canvas (framed); Signed; 26" x 32"; Exhibition: Paris Exposition of 1900 (label on verso); Paris Salon, 1901; 70th Annual Exhibition of the Pennsylvania Academy of Fine Arts, Philadelphia, 1901; 76th Annual Exhibition of the National Academy of Design, New York City, 1901. Est: \$45,000-55,000.



Wojcieck (Voy) Fangor Untitled, 1964; Oil on canvas (framed); Signed and dated; 51 3/8" x 51 1/4"; Provenance: Private Collection, New York. Est: \$30,000-50,000 **Afro Basaldella** Untitled, 1948; Gouache on paper laid down on board (framed); 13 1/4" x 18 3/4". Est: \$30,000-40,000. **Zhu Wei** China China, 2005; Bronze; Signed and numbered 5/12; 50" high (including base); Est: \$80,000-120,000.

Contemporary photographs are another mainstay of the sale and there are a number to choose from, including the work of artists Larry Clark, Gregory Crewdson, John Dugdale, Nan Goldin, Justine Kurland, Barbara Morgan and Stephen Shore. There are two photographs by William Eggleston: an untitled view of a construction site and "Window and Lace Curtain", both estimated at \$3,000-5,000. Also notable is Robert Mapplethorpe's 1981 portrait "Vincent" (presale estimate \$3,000-5,000) and Cindy Sherman's Pig Woman from 1986 (presale estimate \$2,000-3,000).

Highlights among the original prints and multiples in the sale include a Chuck Close self portrait (presale estimate \$10,000-15,000); Richard Diebenkorn's "Two Right Triangles" (presale estimate \$3,000-5,000); Helen Frankenthaler's "Corot's Mark" (presale estimate \$5,000-7,000); skateboard decks by Jeff Koons and Takashi Murakami and more by Joseph Albers, Richard Artschwager, Joseph Beuys, Stuart Davis, David Hockney, Robert Indiana, Jasper Johns, Alex Katz, Roy Lichtenstein, Robert Mangold, Robert Rauschenberg, James Rosenquist and Kiki Smith.

Auction Contact Information

Meredith Hilferty: 609-397-9374 or meredith@ragoarts.com

Exhibition Preview

Saturday, May 9 through Thursday, May 14, noon until 5pm and by appointment. Doors open at 9 a.m. on the mornings of the sale.

Catalogues

Online at ragoarts.com. Printed catalogues are \$20 each or both for \$30 and can be purchased by calling (609) 397.9374. You can also e-mail a request to info@ragoarts.com.

Notes for the Editor

High-resolution image available.

More information online at ragoarts.com.

About Rago Fine Art Auctions

Rago Fine Art Auctions is the fastest growing auction division at Rago's. With its initial record-breaking sales (the Brutton Herrick Collection and the Kenneth Freed Collection), it launched itself in the marketplace as a source for first-rate work by both established and emerging artists. Small wonder this department attracts so much superb property. Rago's commitment is to significant art at any price point and all forms of visual expression: painting and sculpture, drawings, prints and illustrated books, installations, photography and video. It's a point-of-view that has attracted much exceptional and interesting art. Top prices achieved for the sale of work by artists from Celmins to Cropsey, Warhol to Redfield. Rago's has built its professional reputation on achieving outstanding prices at auction for its clients and attention to their goals as sellers is of paramount importance. Clients enjoy direct access to partners and experts throughout the valuation, consignment and auction process.

About Rago Arts and Auction Center

Since 1994, Rago's has served thousands of sellers and buyers with a singular blend of global reach and personal service. First specializing in 20th century design, Rago's expertise now covers centuries of fine art, decorative arts, furnishings, jewelry and ethnographic artifacts. It is a world-class venue through which to buy and sell, with sales of over \$25 million in the 2008 season. It is also a destination for those who seek to learn and share knowledge about art, antiques and collecting, with free valuations for personal property (from a single piece to collections and estates) and auction exhibitions in house and online.

END OF PRESS RELEASE